



Product.

Radio Cable Clamps (Rotary)

Prod No.

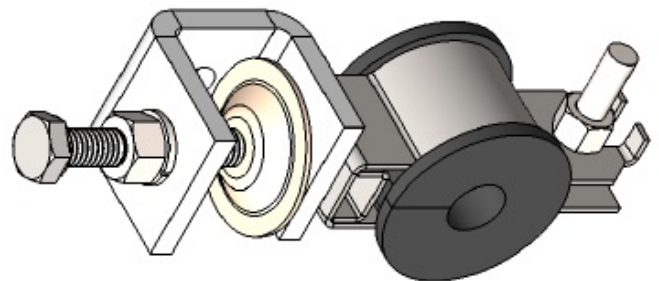
FC-CI-RA

Application and Properties:

To setup on telecommunication ladders and towers that fixing RG213, RG223 or 1/2 feeder cable (by converter) without any damage.

- Other Details

- Corrosion and UV resistant
- Capability of keeping different radio cables with different rubber converters
- Available converters: RG223 mono converter , RG223 twin, triple and six-way converter.
- Capability of feeder installation in any direction by rotary type of clamp
- Easy and fast installation



- Technical Specification

cable size	1/2 & 7/8 LCF & SCF , RG213 , RG223
Metal component, Material	Stainless steel 304
Rubber component, Material	EPDM
Cable runs	1,2,3,6
Resistance to corrosion	High
Temperature Operation	-15 to +60 (°c)
Humidity	0-100 %

RG213 mono converter



RG223 twin converter



RG223 triple converter



RG223 six-way converter

